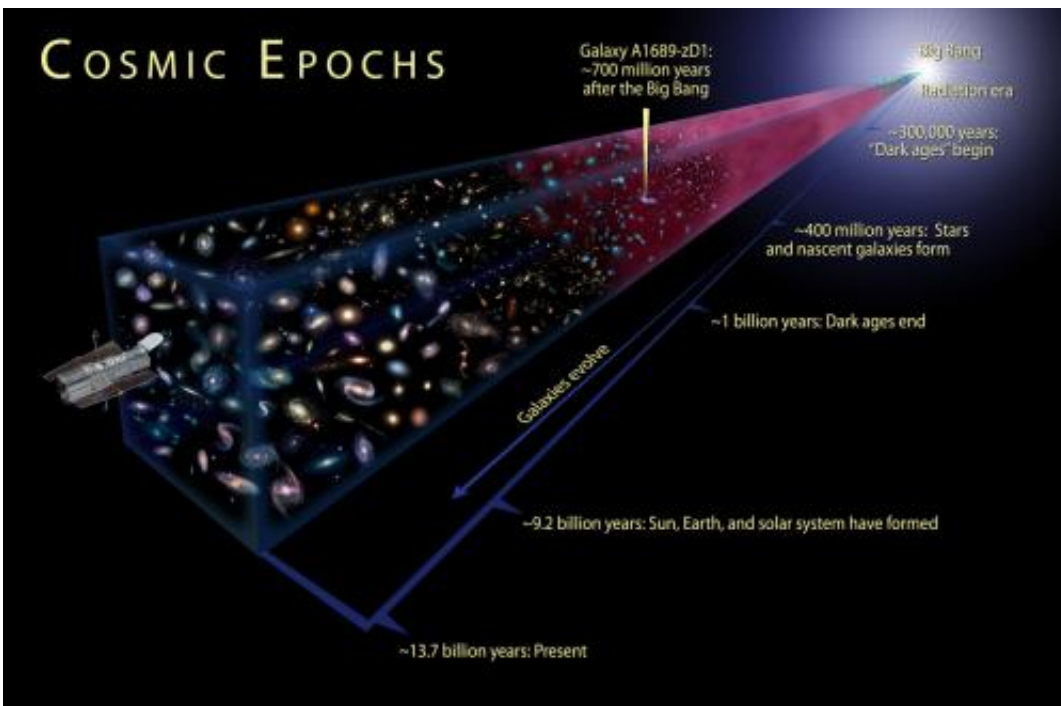


Nearby ancient star is almost as old as the Universe

February 25 2013, by Dan Majaess



A new age estimate for the star HD 140283 is 14.46 ± 0.80 billion years, which implies that HD140283 was among the first few generations of stars created in the Universe. Credit: NASA, ESA, A. Felid (STScI)

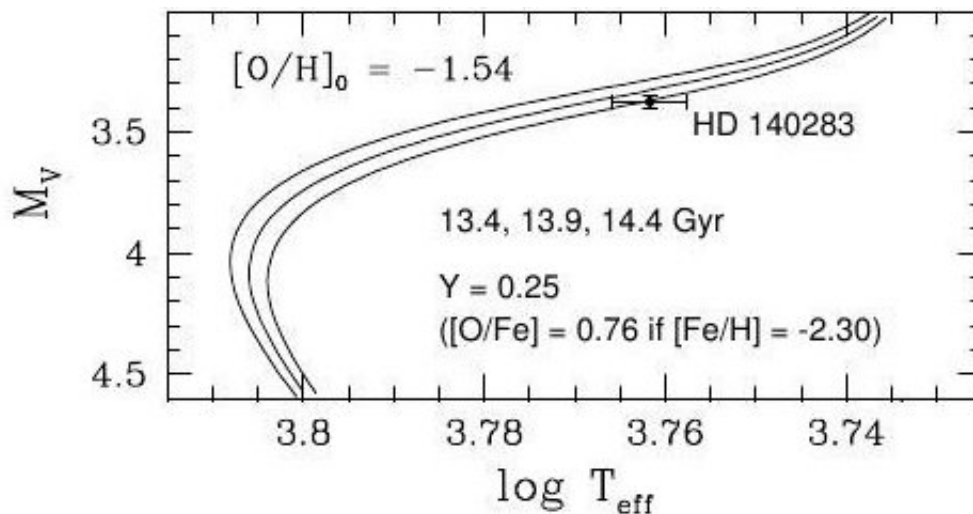
A metal-poor star located merely 190 light-years from the Sun is 14.46 ± 0.80 billion years old, which implies that the star is nearly as old as the Universe! Those results emerged from [a new study](#) led by Howard Bond. Such metal-poor stars are (super) important to astronomers because they set an independent lower limit for the age of the Universe,

which can be used to corroborate age estimates inferred by other means.

In the past, analyses of globular clusters and the Hubble constant ([expansion rate](#) of the [Universe](#)) yielded vastly different ages for the Universe, and were offset by billions of years! Hence the importance of the star (designated HD 140283) studied by Bond and his coauthors.

"Within the errors, the age of HD 140283 does not conflict with the [age of the Universe](#), 13.77 ± 0.06 billion years, based on the microwave background and Hubble constant, but it must have formed soon after the [big bang](#)." the team noted.

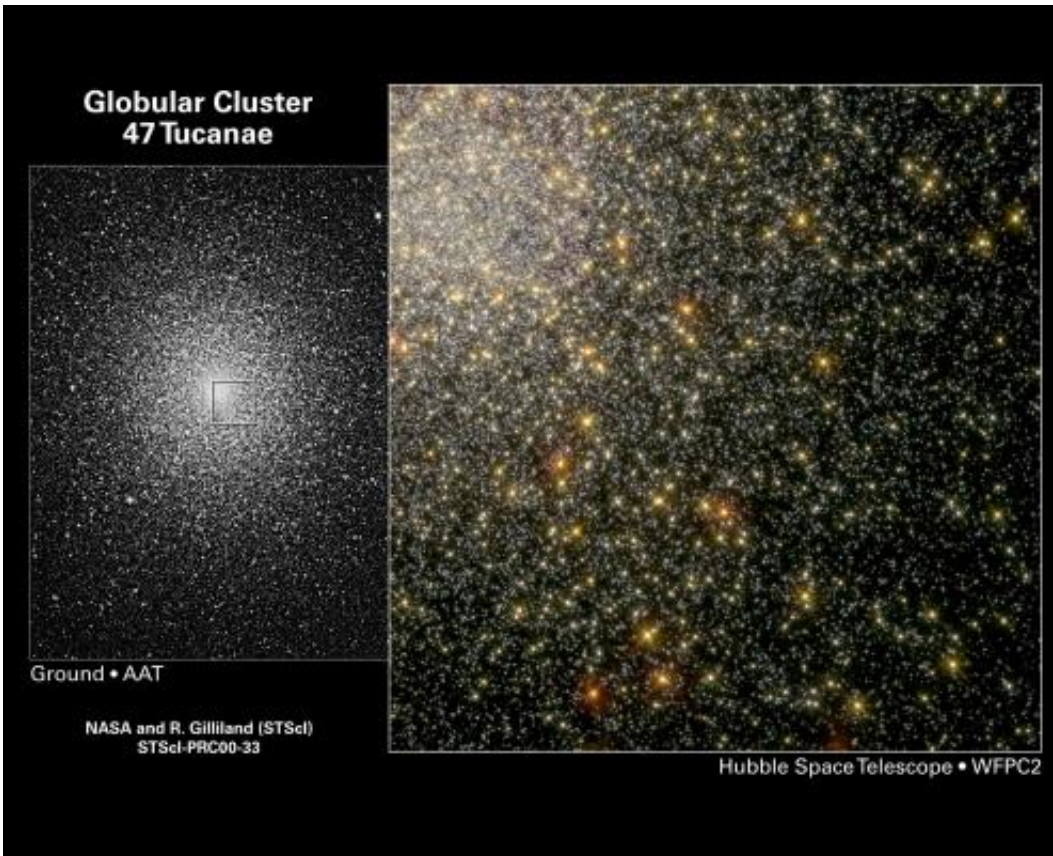
Metal-poor stars can be used to constrain the age of the Universe because metal-content is typically a proxy for age. Heavier metals are generally formed in supernova explosions, which pollute the surrounding interstellar medium. Stars subsequently born from that medium are more enriched with metals than their predecessors, with each successive generation becoming increasingly enriched. Indeed, HD 140283 exhibits less than 1% the [iron content](#) of the Sun, which provides an indication of its sizable age.



HD 140283 is estimated to be 14.46 ± 0.80 billion years old. On the y-axis is the star's pseudo-luminosity, on the x-axis its temperature. Computed evolutionary tracks (solid lines ranging from 13.4 to 14.4 billion years) were applied to infer the age. Credit: adapted from Fig 1 in Bond et al. 2013 by D. Majaess, arXiv

HD 140283 had been used previously to constrain the age of the Universe, but uncertainties tied to its estimated distance (at that time) made the [age determination](#) somewhat imprecise. The team therefore decided to obtain a new and improved distance for HD 140283 using the [Hubble Space Telescope](#) (HST), namely via the trigonometric parallax approach. The distance uncertainty for HD 140283 was significantly reduced by comparison to existing estimates, thus resulting in a more precise age estimate for the star.

The team applied the latest evolutionary tracks (basically, computer models that trace a star's luminosity and temperature evolution as a function of time) to HD 140283 and derived an age of 14.46 ± 0.80 billion years (see figure above). Yet the associated uncertainty could be further mitigated by increasing the sample size of (very) metal-poor stars with precise distances, in concert with the unending task of improving computer models employed to delineate a star's evolutionary track. An average computed from that sample would provide a firm lower-limit for the age of the Universe. The reliability of the age determined is likewise contingent on accurately determining the sample's [metal content](#). However, we may not have to wait long, as Don VandenBerg (UVic) kindly relayed to Universe Today to expect, "an expanded article on HD 140283, and the other [similar] targets for which we have improved parallaxes [distances]."



Age estimates for the Universe as inferred from globular clusters and the Hubble constant were previously in significant disagreement. Credit: NASA, R. Gilliland (STScI), D. Malin (AAO)

As noted at the outset, analyses of globular clusters and the Hubble constant yielded vastly different ages for the Universe. Hence the motivation for the Bond et al. 2013 study, which aimed to determine an age for the metal-poor star HD 140283 that could be compared with existing age estimates for the Universe. The discrepant ages stemmed partly from uncertainties in the cosmic distance scale, as the determination of the Hubble constant relied on establishing (accurate) distances to galaxies. Historical estimates for the Hubble constant ranged from 50-100 km/s/Mpc, which defines an age spread for the Universe of ~10 billion years.

The aforementioned spread in Hubble constant estimates was certainly unsatisfactory, and astronomers recognized that reliable results were needed. One of the key objectives envisioned for HST was to reduce uncertainties associated with the Hubble constant to

Citation: Nearby ancient star is almost as old as the Universe (2013, February 25) retrieved 5 May 2026 from <https://phys.org/news/2013-02-nearby-ancient-star-universe.html>

This document is subject to copyright. Apart from any fair dealing for the purpose of private study or research, no part may be reproduced without the written permission. The content is provided for information purposes only.